

March 2025

THE   
*Cresset*



News, views and what's on, in and around Bottisham

# Annual Parish Meeting

Tuesday  
29th April  
7:30pm

Sports  
&  
Social Club



What projects are going on in the village?

Are there plans for amenity improvements?

Can we have a play area?

Where does my Council tax money go?

What's being done about roads & parking?

To mark the 80th anniversary of the end of World War II please join us on



Saturday 10th May  
2pm - 5pm at the

'Triangle' for tea & cake,  
fish 'n' chips  
& family entertainment



If you are happy to help out email [clerk@bottisham-pc.gov.uk](mailto:clerk@bottisham-pc.gov.uk)

## Welcome to your March magazine



“Daffodils,

That come before the swallow dares, and take  
The winds of March with beauty.” - *William Shakespeare*

That is the trouble with March. We are often fooled into thinking spring has come to stay, only to be caught out on a wet and windy day in a tee shirt and no coat. Spring is coming but winter likes to hang around, so don't get the BBQ out just yet!

Last month I highlighted the work Steve Allen had done on the village sign, and the work to be done on the Church Clock. Well rather him than me, he has fixed this and we can once again hear the hourly chimes as well. I thought our cover picture would show what precarious means!!

It might be easy to miss the advert on page 35, for the Bottisham Local Charities. So I would like to highlight their need for a new trustee. This trust has been running for many years and does the most essential work at a very local level, directly and through other charities. If you want to put back into your local community, then this would be an ideal opportunity. Not a very onerous task and it does a great deal to help people in your own community. I would commend interested people to respond to this call.

There are lots of events coming up over the next few months and there are early notices of these in this month's magazine.

The Annual Parish Meeting in April is your chance to find out what is going on in our Parish and for you to meet with the people who work on our behalf, from the Police to Education, from Local Council to Transport provision.

Then looking further ahead, there is a VE Day commemoration and celebration planned for an event on the triangle, which sounds like it should be a fun day.

Even further ahead is notice of an art exhibition for young folk in June. This may seem early notice, but it should give you time to get started on producing you own artwork to show to the world.

A couple of concerts in the Church look interesting, particularly as it comes with cake! Added to that, it is all in a good cause to raise some much needed funds for the fabric of the Church.

Bird Brain, this month, focuses on the Goldfinch, which is one of my favourites with their flash of red, gold and yellow. They are pretty aggressive little fellows when there is competition on the bird feeders.

But life for all the birds in my garden is getting a bit better, as I win the battle against the squirrels.

It doesn't take long for the birds to get used to squirrel proof cages and they now flock round going in and out as if there was no barrier at all.

Enjoy this month's magazine and there will be more from me next month, when Easter will be just around the corner.

P W

## *News From Holy Trinity Church Bottisham*

Spring is here – well almost. Although it is still quite chilly the bulbs in the ‘spring area’ of the churchyard are beginning to emerge and it is a real pleasure to see snowdrops, aconites, narcissi, and bluebells reaching upwards to the sun. The church clock is in the news again with both positive and negative developments. Steve Allen worked from a cherry picker to refix the church clock face back onto the tower and make it safe again. However I am afraid that even after two hours of sterling work he was unable to get the clock going again in spite of more than 33years plus dealing with it. We are contacting clock repairers for advice on how to fix it. Amazingly one week later however, Steve and a colleague have been inside again and it seems they have finally fixed it – well done Steve!



We are starting to organise a return of our Saturday Morning ‘Coffee and Cake Concerts’ for the warmer months. The first will take place on Saturday 29th March at 10.30am when Sarah Maxwell, who has a beautiful soprano voice, will give a concert of popular as well as not so well-known songs accompanied by John Marsh. The second will take place on Saturday 10th May when Dr Christopher Robinson CVO CBE former organist and choirmaster at Worcester Cathedral, St George’s Chapel, Windsor Castle and St John’s College Cambridge, will play a variety of well known as well as some not so well known pieces. It is suggested that a £5 donation would be appropriate for adults. There will be no charge for children. These events will last for about an hour. Do come at 10.30 and enjoy a coffee (or tea or juice) and some cake before the music begins.

We have a small number of willing helpers who clean the church and keep it tidy – the rota comes around about twice a year. We are looking for one or two more to help with this task. If you are willing to help please contact Helen Cole (01223 812573) who kindly organises the cleaning roster.

Our monthly Holy Communion Service on the first Sunday of the month, March 2nd, led by our Vicar Max Osborne assisted by our curate will include two Baptisms. This service will be particularly joyful because those being baptized are a teenager and a young adult who later in the year want to go on to confirmation, to be conducted by Bishop Dagmar at Saint Vigor’s Church, Fulbourn in June.

Our brief Compline by Candlelight held on Zoom on the first Wednesday of the month (March 5th at 8.00pm), is led by Sarah Maxwell, and our Morning Prayer on the third Sunday (March 16th) also led by Sarah complete our services for March. On Ash Wednesday, March 5th, there will be a Communion Service at Swaffham Bulbeck at midday, and the Mothering Sunday Service this year will be held in Lode at 10.30am on 30th March.

We would love to see you at one of our services and to chat over refreshments afterwards.

*Stuart Field, Churchwarden*

## Contents

Services in the Anglesey Benefice.....5	Cambridgeshire Fire & Rescue Service.....23
Parish Council Report.....7 & 9	
Planning Notes.....9	Public Transport Matters .....25
District Councillors' Report.....11	Anglesey Abbey.....27
Bottisham Community Library Association.....13	Bottisham WI.....27
Bottisham Community Sports & Social Club.....15	Bottisham and District Gardening Club.....29
News from Bottisham Medical Practice Patients' Participation Group .....17	Anglesey Group Mothers' Union .....29
Bottisham Bird Brain.....19 & 21	25 Years of Red2Green.....31
Bottisham Airfield Museum Group (BAMG).....21	Litter Pick.....35

## *Bottisham Adult Learning Association (BALA)*

**THE COLD WAR CONTINUED** - After a very successful start to the year with a course on aspects of the Cold War, Richard Gibbons has agreed to continue the course after half term.

**Starting on Thursday 27th February at 10.30 until 3rd April the course will include:**

- Able Archer, 1983, the desperate crisis that no-one knew about!
- The Cold War in Space: hope, despair and triumph
- Inside Stories: unravelling American, Soviet and Cuban Politics and Diplomacy behind the Cuban Crisis
- The UK's Nuclear Defence: how Britain faced the Cold War
- NATO vs the Warsaw Pact: what was the reality?

**Please note there will be no session on 20th March**

BALA courses are held in the main hall at Bottisham Community Sports and Social Centre in Downing Close.

A 4-week course on ASTRONOMY presented by Jonathan Clough has been arranged for early summer. Details to follow nearer the time.

Any enquiries to [Bottishambala@btinternet.com](mailto:Bottishambala@btinternet.com)

*Helen Cole*

## Reconnect to your life

Whatever your hearing difficulty, angli-EAR Hearing uses the most up-to-date tests and equipment to find the best solution for you.

Where to find us:  
Audiology House (Cambridge)  
15 Woollards Lane  
Great Shelford  
Cambridge  
CB22 5LZ



Book your  
**FREE**  
ear health  
check today

**Independent audiology  
experts you can trust**



Hearing  
Assessments



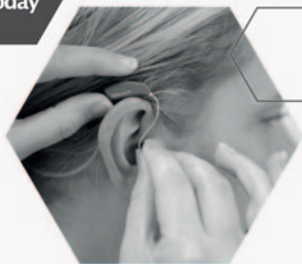
Ear Wax  
Removal



Hearing  
Aids



Tinnitus  
Solutions



**BOOK ONLINE**

[www.angliearhearing.co.uk](http://www.angliearhearing.co.uk)



**01223 661399**

[info@angliearhearing.co.uk](mailto:info@angliearhearing.co.uk)

## *Services in the Anglesey Benefice*

<b>Sun Mar 2nd</b>	<b>9am</b>	<b>Online service on Zoom</b>
	<b>10.30am</b>	<b>Holy Communion – Bottisham</b>
	<b>4pm</b>	<b>Village Worship - Quy Village Hall</b>
<b>A.Wed Mar 5th</b>	<b>12 noon</b>	<b>Holy Communion – Swaffham Bulbeck</b>
	<b>8pm</b>	<b>C by C (a short contemplative service) – online via Zoom</b>
<b>Sun Mar 9th</b>	<b>9am</b>	<b>Online service on Zoom</b>
		<b>Holy Communion - Quy</b>
	<b>10.30am</b>	<b>Family Worship – Swaffham Prior</b>
<b>Sun Mar 16th</b>	<b>9am</b>	<b>Online service on Zoom</b>
		<b>Morning Prayer - Quy</b>
	<b>10.30am</b>	<b>Holy Communion - Swaffham Bulbeck</b>
		<b>Morning Prayer – Bottisham</b>
<b>Sun Mar 23rd</b>	<b>9am</b>	<b>Online service on Zoom</b>
	<b>10.30am</b>	<b>Holy Communion (BCP) - Swaffham Prior</b>
<b>Mothering Sun</b>		
<b>March 30th</b>	<b>9am</b>	<b>Online service on Zoom</b>
	<b>10.30 am</b>	<b>Holy Communion – Lode</b>
	<b>6pm</b>	<b>Evensong – Swaffham Prior</b>
<b>Every Thurs</b>	<b>10.30am</b>	<b>Holy Communion - Lode</b>

---

Please check the Church notice board for any changes to these details.  
or email [admin@angleseygroupparishes.co.uk](mailto:admin@angleseygroupparishes.co.uk), which is also the address to request the  
Zoom link. You are very welcome to attend any of these services.

---

## **COFFEE & CAKE CONCERTS**

**HOLY TRINITY CHURCH BOTTISHAM**

### **SATURDAY 29TH MARCH 10.30AM**

Sarah Maxwell – Soprano, with John Marsh – keyboard  
*Sarah will sing a variety of popular as well as some less well-known songs.*

### **SATURDAY 19TH APRIL 10.30AM**

Dr Christopher Robinson CVO CBE  
Former Organist & Choirmaster, Worcester Cathedral, St George's Chapel  
Windsor Castle, and St Johns College Cambridge  
*Christopher will play a variety of well-known as well as some not so familiar organ pieces.*

**The concerts will last around 45 minutes**  
**Coffee & Cake will be provided for a suggested £5+ donation**

# SG LAW

Plumbing & Heating Services

01223 803444

hello@sglawplumbing.co.uk

www.sglawplumbing.co.uk

BATHROOMS

HEATING

PLUMBING

SERVICING



## Foot Works FHP Ltd

MCFHP MAFHP CPD NT

Mobile foot health professional in the comfort of your home

### Services include...

Nail cutting / filing  
Corns / Callus / Verruca  
Ingrowing toenails treatment  
Thick nail reduction  
Fungal infection  
Dry/Hard skin/Special treatment for cracked heels  
Assessment of the diabetic foot

Weekends Available Mobile:07708 386396

E-Mail: wilmasonia@hotmail.co.uk



Insured, Accredited and DBS checked

Member of the British association of the foot health professional



# *Parish Council Report*

**The next full council meeting will be held by on Monday 3rd March 2025, 7.30pm at the Poppy Room, Bottisham Sports and Social Club.** All Parish Council meetings are open to the public. Please note that the clerk to the council does not keep regular office hours. Replies to emails and phone calls will be attended to as soon as is practicable. Details of upcoming meetings and Councillor Details are available from the Parish Council Noticeboard and from the website [bottisham-pc.gov.uk](http://bottisham-pc.gov.uk).

## **ANNUAL PARISH MEETING**

Please can I encourage you to join the Annual Parish Meeting at 7.30 on 29th April 2025 at Bottisham Sports and Social Club? This meeting is for the residents, and we are changing the format this year to try and really hear from you. To encourage discussion, we are going to have three break-out groups around the topics of Highways & Transport, Planning & Development and Environment & Community. In each breakout group there will be the opportunity to ask questions and give your opinion. Each group will rotate round the three break-out sessions through the evening – with a final plenary session to reflect on a couple of the key questions that have come up. Of course, you can also comment on any other matter that may not be covered by these topics.

Your County & District Cllrs, the Police and representatives from the Village College and Primary School will be present. As well as joining in the discussions, we are asking them to provide a report before-hand (to be published on our website) outlining their achievements and aspirations.

We are looking forward to welcoming as many residents as possible to the event. Please do join us and make sure your voice is heard. More details about the event are on the inside front cover of this edition of the Cresset.

## **NEIGHBOURHOOD PLAN RESIDENT'S CONSULTATION**

Just in case this edition gets delivered to you before the date, a reminder to please join us for the resident's consultation on the draft Plan. This takes place on 1st March 2025 between 14.00 – 19.00 at the Poppy Room, Bottisham Sports & Social Club.

## **VE DAY – 80TH YEAR CELEBRATION**

As many of you know, this year will mark the 80th anniversary of the end of WW II in Europe. The Parish Council would like to take the opportunity to celebrate this by hosting an event on the Triangle on the afternoon of 10th May. There will be an opportunity to come together to enjoy refreshments, hopefully some entertainments, cake and for those of you who wish to make it more of an event, Fish and Chips will also be available. More details about the event are on the inside front cover of this edition of the Cresset.

## **BOTTISHAM LOCAL CHARITIES**

Bottisham Local Charities is a charity for those in need of financial assistance within our community. The Trustees distribute funds generated from past benevolent donations. Due to

*Continued on page 9*

# D.S. FREEMAN

## Painters & Decorators

- Residential & Commercial
- Interior & External
- Fully Insured
- All Aspects Undertaken

duncanfreeman@hotmail.co.uk

**Tel: 07960 769176**

Longmeadow

## Morgan's Hairdressers

01223 811646



30 years Experience

Styling for all the family

Including perming

And colouring

Specialist Colours

Opening hours are:

Tuesday to Friday 9 am to 5 pm (weds late opening to 8 pm)



**E.J. DENSTON CARPENTRY**  
Kitchens & Construction

- Carpentry & Joinery
- Kitchen Projects
- Renovations & Construction



Tel: 01223 813279

Mobile: 07711578687

[www.eddenstoncarpentry.com](http://www.eddenstoncarpentry.com)

[eddenstoncarpentry@gmail.com](mailto:eddenstoncarpentry@gmail.com)

## Carpentry Services

# TONY MARTIN

Over 30 years experience

***Any carpentry jobs  
undertaken — BIG or small***

Call Tony  
for a free estimate

**Tel: 01223 812786**

**(Bottisham)**

**Mobile: 07767475987**

*Continued from page 7*

a retirement, the Charity is looking to appoint another trustee. This is a voluntary position, and the charity generally has three meetings a year. Please do consider this, as I know the Charity makes a difference in the village.

Applications and enquiries should be submitted by 31st March to the Clerk, Jonathan Barrett, who can be contacted on 01223 813774 or 0792 042 5154 or email: [bottishamlocalcharities@gmail.com](mailto:bottishamlocalcharities@gmail.com)

## **ALLOTMENTS**

Unfortunately, due to some unresolved legal questions, the new Cope Close allotments have still to be transferred into the ownership of the Parish Council. So, we are unsure when we will be able to offer the 10 allotments to residents. We are anticipating keen interest and agreed at our February Council meeting that we will hold a public ballot if applications exceed supply.

If you would like to be put on a waiting list for the ballot, then please feel free to contact me (my details are below).

## **PARISH COUNCIL VACANCY**

The Parish Council still has one vacant seat that needs to be filled by co-option. We are looking for a motivated individual who would like to help shape the village for the future. It is often not recognized how much the Parish Council contributes to the community. But being a Councillor is a great way of getting involved and making a real difference. Please do ask for further information about what the role involves by either speaking with Jon, Nadene or myself.

**If you need any further information relating to anything raised in this report or anything you wish to bring to the attention of the Parish Council, then please do not hesitate to contact me via email, [clerk@bottisham-pc.gov.uk](mailto:clerk@bottisham-pc.gov.uk) or via phone 07369248998.**

*Sam Chambers-Turner - Clerk to the Council*

---

---

## ***Planning Notes***

---

---

### **New applications:**

25/00029/FUL, 21 Parsonage Barns Bottisham Cambridge Cambridgeshire CB25 9EG Single storey extension to rear (already approved) and 2 storey dormer extension to rear.

25/00034/FUL, The Vicarage 86 High Street Bottisham Cambridge CB25 9BA Proposed single storey side extension, two storey and single storey rear extension and front porch extension with new windows and doors



**Copy deadline for next issue is 14 March.**

*Please send material to the editor at [BottishamCresset@gmail.com](mailto:BottishamCresset@gmail.com)*



# Are You Paying Too Much For Your Medical Insurance?

## Independent And FREE Advice

- **Switch to an alternative scheme** – If you are currently insured, switching to a competitor can mean *substantially lower rates*
- **Pre-existing conditions covered** – It is often possible to include pre-existing medical conditions currently covered by your existing provider
- **Improve your coverage** – We can frequently improve your cover whilst also lowering the cost of your premium
- **Complexities of different schemes** – In many cases, people are over insured – we can ensure you are covered with a scheme that meets your individual needs and requirements
- **Full cover for cancer treatment** – Many policies do not cover cancer in full – we are able to advise on your current level of coverage



For further information, please call Simon Lively at  
M&L Healthcare Solutions -

**FREEPHONE 0800 145 5838 or 07710 993990**

Email: [simon.lively@mlhs.co.uk](mailto:simon.lively@mlhs.co.uk)

quoting ref: **The Cresset**

M&L Healthcare Solutions Ltd is authorised and regulated by the Financial Conduct Authority. (FCA Reference number 943748)

# *District Councillors' Report*

## **FINANCE AND ASSETS COMMITTEE ON 30 JANUARY 2025**

At this meeting, the following decisions were made:

1. The first draft of the 2025/26 Budget was discussed. The Director Finance recommended that the District Council Tax should increase by £5 (for a Band D property), but the Conservatives' amendment to have no increase in Council Tax was agreed.
2. The Crematorium project has now moved from RIBA stage 3 to RIBA stage 4, after the original design was value-engineered, and the outcome will be brought to Full Council in May.
3. The draft Equality, Diversity and Inclusion Policy 2025-2028 was formally adopted.

## **LOCAL GOVERNMENT RE-ORGANISATION**

The Government has launched a review of Local Government Authorities with a view to improving efficiency. There is little time for constructive consultation and submission to the Government, but there will be a discussion among ECDC members as to what would be of most benefit to our residents. There is ongoing discussion with the other Local Government Authorities in the county. Parish Councils will remain, and may have more voice in local matters.

## **SUNNICA**

It is not expected that there will be any formal submission of plans until late 2026. ECDC, CCC and West Suffolk DC will be liaising with each other on this matter. Once the plans have been submitted then there will be eight weeks for the Councils to respond. We shall be engaging with communities affected by the infrastructure, and individuals or groups can submit comments by email to: [sunnica@eastcamb.gov.uk](mailto:sunnica@eastcamb.gov.uk)

The next ward surgery will be at the pavilion on The Denny in Swaffham Bulbeck from half past six to half past seven on Thursday 20 March 2025, followed by a social meeting at The Black Horse in the same village.

*Cllrs Charlotte Cane MP and John Trapp*



**Newmarket  
Community  
Cinema**  
The Stable, High Street, Newmarket.

**March 17th: ONE LIFE (12)**

Doors open at 6.30pm with the film starting at 7.30pm. Admission is £6 which includes free refreshments. If you would like to reserve seats, please email [richardjbowler@outlook.com](mailto:richardjbowler@outlook.com) or phone 01638 666810.

# HARRISONS OF BURWELL LTD

**Plumbing and Heating**

*FREE ESTIMATES GIVEN*

Gas Boiler Servicing

**Clarence House, 7 Ness Road, Burwell, Cambs CB25 0AA**  
**Telephone: Newmarket 01638 742873 - Mobile 07932 773515**

**email: [harrisonsofburwell@gmail.com](mailto:harrisonsofburwell@gmail.com)**

Gas Safe Registered

# HAYDEN

**THE CLEANING SPECIALIST**

WOULD YOU LIKE YOUR CARPETS  
OR UPHOLSTERY CLEANED?

HAYDEN IS LOCAL TO THE AREA,  
OFFERING FREE QUOTATIONS  
AND ADVICE

WE ALSO CLEAN WINDOWS WITH  
OUR NEW REACH AND WASH  
SYSTEM OR TRADITIONAL, YOUR  
CHOICE

Merrywood  
8 Lode Rd. Bottisham CB25 9DJ  
01223 813766 or 07919561665  
Email: [hayden.woodruff@btinternet.com](mailto:hayden.woodruff@btinternet.com)

## k-domestic electrical solutions



Complete installations & rewires

Small and large alterations

Lighting

Internal & External work

PAT testing

Periodic Inspection & Reports

Full Inspection, Testing,  
Verification & Certificate issue

LED

Under Floor Heating

Voltage Optimization

your **local** electrical service of choice and recommendation

**Karl Howe**

**01638 610438 M: 07541 008613**

Email: [enquire@k-elecsolutions.com](mailto:enquire@k-elecsolutions.com) Website: [www.k-elecsolutions.com](http://www.k-elecsolutions.com)

Fully qualified Part P and 17th Edition

**City &  
Guilds**  
Qualified



## ***Bottisham Community Library Association***

March, and hopefully the start of Spring. Maybe it's also an opportunity to start something different such as some research into family history and events. The Library is an ideal place to start. Cambridgeshire Libraries provides free access in a library, including Bottisham Community Library, to sites such as Ancestry.com, Find My Past and Newspaper Archives. All you need to have to access these resources is your library card – and if you have not got one, you can register free of charge for this at the library. We have a dedicated Library Computer and printer. The only thing you might need to pay for are any printing costs!

Our Book of the Month for March is Ross Montgomery's book, 'I Am A Rebel' which is a Junior Fiction book about Tom's dog, Rebel. Rebel has a perfect life on the farm until the war comes a bit too close and Tom leaves and joins the rebel soldiers. Rebel knows he has to go and save this important human! Waterstones Book of The Year 2024.

Lego Club and StoryTime will be on March 15th at 10.30am. Younger children will enjoy our collection of Duplo.

The date for the Mobile Library visit to Downing Close, Bottisham is Thursday, March 27th.

*Keep Reading!*

### **"Everyone prays.**

**BUT NO ONE FINDS IT EASY. WE ALL NEED A LITTLE HELP."**

**THE ANGLESEY GROUP OF PARISHES PRESENTS.**

### **'HOW TO PRAY' A COURSE FOR EVERYONE.**

Wide appeal, whether you attend our village churches, or not.  
Based on 'The Prayer Course' and Pete Greig's excellent book 'How to Pray'.  
Free (no course fee).

#### **The programme:**

Once a week, from Shrove Tuesday until the Tuesday before Easter.  
Offered twice – you can choose Tuesdays at Lode church or Thursdays on Zoom,  
or swap between them to suit your needs. Both are from 7:30pm -- 9pm. Come  
to either meeting.

- |                          |                    |
|--------------------------|--------------------|
| 1) Prayer/Adoration,     | 4th or 6th March   |
| 2) Petition,             | 11th or 13th March |
| 3) Intercession,         | 18th or 20th March |
| 4) Reflection/Listening, | 25th or 27th March |
| 5) Unanswered Prayer     | 1st or 3rd April   |
| 6) Spiritual Warfare.    | 8th or 10th April  |

Followed by a 'Fellowship meal' on Tues 15th April.

**To sign up, or to get the Zoom link, please email  
[lent@angleseygroupparishes.co.uk](mailto:lent@angleseygroupparishes.co.uk)  
or phone 01223 813963**

## BOTTISHAM COMMUNITY LIBRARY

Reg Charity No. 1104926

# QUIZ NIGHT

SATURDAY 8th MARCH

7.00 FOR 7.30 p.m.

BOTTISHAM COMMUNITY SPORTS &  
SOCIAL CLUB

£9.00 PER PERSON

TO INCLUDE PLOUGHMANS

Maximum 6 per table



Please contact

Margret Coles [margretcoles@btinternet.com](mailto:margretcoles@btinternet.com) or 812199 to  
book a table

## Anglesey Benefice

### Mothering Sunday Communion Service

Sunday 31<sup>st</sup> March

10.30 am

Lode

All Welcome

refreshments served after the service



## My love for dogs

### An alternative to Kennels

A personal, caring approach to dog care.

In our home, your dog will receive two hour-long walks every day as well as treats, socialisation with other dogs and the administration of any required treatments.

- Fully insured and police checked
- Licensed by Sth. Cambs. District Council.

For further details call Amanda on  
07903 806750

Based In Steeple Morden near Royston.

# C & BLINDS C

Specialists in Blinds  
Any Size, Any colour

Vertical Blinds  
Roller Blinds  
Venetian Blinds  
Wooden Blinds  
Roman Blinds

Repairs

Free estimates

01223 211171  
07761 262070



# We would love to see you at Bottisham Community Sports & Social Club



## OPENING HOURS

Weekdays	5pm to 11pm
Saturday	12 noon to 11pm
Sunday	12 noon to 9pm

**Non-Members are always very welcome.**  
**If you would like to join the membership fee is just £20 per year plus a £1 share in the first year.**  
**Members benefit from reduced prices over the bar and cheaper entrance for events.**

## WHAT'S ON IN 2025!

**Saturday 8<sup>th</sup> March - Library Quiz Night**

**Saturday 15<sup>th</sup> March - Elvis Tribute Night**

Entrance members £3, nonmembers £5

**Friday 28<sup>th</sup> March - Open Mic Night**

Music by our talented locals. Entrance Free

**Saturday 29<sup>th</sup> March - 'Footlights' a quartet of Capella singers**

Entrance £6 includes a Ploughman's Supper

Tickets from the club

**Saturday 19<sup>th</sup> April - Children's disco and Easter Egg Hunt**

4:40pm start

**Saturday 26<sup>th</sup> April - Bowling Club Race Night**

**Saturday 14<sup>th</sup> June - Our Annual Fun Day - SAVE THE DATE**

A day of music, magic & dancing.

Catch up with friends in the café or at the BBQ

Everyone is welcome.

Look out for further details

Please refer to the website. [www.bottishamsocialclub.co.uk](http://www.bottishamsocialclub.co.uk) for the latest information. If you wish to be updated with the latest news, please email [bottishamcsase@gmail.com](mailto:bottishamcsase@gmail.com)  
31 Downing Close, Bottisham, Cambridge CB25 9DD Tel. 01223 812063

# 100% FULL FIBRE BROADBAND FOR BOTTISHAM

We've landed in your rural community to deliver a digital boost to homes and businesses.

Upgrade today  
0370 774 0514 or [gigaclear.com](http://gigaclear.com)

★ Trustpilot  
★★★★★ 4.7  
Rated 'Excellent'

**Gigaclear**  
Faster broadband for rural Britain

UP TO 15X FASTER THAN PART FIBRE  
UP TO 5X MORE RELIABLE THAN PART FIBRE

## Stitchshed Sewing

(Formerly Little Stitches)

### Repairs and Alterations

I am based locally and can help you with clothing alterations & repairs, curtains, blinds and cushions

### Sewing Classes

If you wish to learn to sew, then please call for a chat.

Classes at the Stitchshed or private home tuition available for:

- Dressmaking
- Patchwork and Quilting
- General craft sewing

Getting to know your sewing machine!

**Tel: 01638 745160**  
**Mobile: 07762 004395**  
**Email: [stitchshed@gmail.com](mailto:stitchshed@gmail.com)**  
**Web: [www.stitchshed.blogspot.com](http://www.stitchshed.blogspot.com)**

## Christopher THE LOCKSMITH

### ARE YOUR LOCKS BEHAVING BADLY?

We Value Old Fashioned Customer Service  
A Local Trusted Family Business Since 1989

- 🔧 Specialist in UPVC & Wooden Doors
- 🚚 No Call Out Charge
- 🔒 No Fix No Fee
- 🛡️ All Work Fully Guaranteed
- 👴 10% Senior Citizen Discount

For More Advice & Help Call Christopher:  
**07772 111 222**

[www.christopherthelocksmith.co.uk](http://www.christopherthelocksmith.co.uk)

## *News from Bottisham Medical Practice Patients' Participation Group*

**Appointment Availability:** There continues to be a huge number of calls that have to be dealt with and for appointments where the demand exceeds supply. To try and alleviate patient frustration and pressure on our system it is possible to book some appointments and log queries on line, this can be accessed via our website (<https://www.bottishammedicalpractice.nhs.uk/>).

We have listened to your feedback and comments and are currently trialling a change in our appointment model. We have included an additional number of pre-bookable appointments that are available both online and through our Reception team, this trial will be reviewed in the near future.

**Staffing:** Our new Health and Wellbeing Coach, Katja, took up her role in December and is now seeing patients. The coach will work on a 1:1 basis with the patient and design a personalised care plan which addresses one or more of the four lifestyle medicine branches: Nutrition, Exercise, Sleep and Stress management. Please note that a JOY referral needs to be completed which Katja reviews before contacting patients to book appointments. Our Receptionists are not able to book appointments with Katja, but maybe able to assist with a JOY referral. Unfortunately our Social Prescriber, Chloe, has left the Practice. We are working with the Primary Care Network (PCN) to appoint a new Social Prescriber / backfill the hours to maintain services. JOY is a referral system within the Primary Care Network whereby the referrals are triaged to ensure they have been assigned to the correct team

**Did Not Attend (DNA):** Unfortunately between the 1st and 31st January there were 79 appointments that are recorded as DNA or Patient walked out. This equates to 20.91 hours of wasted clinical time. We appreciate that circumstances and situations can change so we would appreciate it if you are unable to attend an appointment, please let us know so we can reallocate this to another patient. Thanks to those patients who do notify of a cancel or move their appointments.

**Dispensary:** There is national a shortage of dispensers but following numerous recruitment rounds we are currently working through the appointment process for a suitable candidate. We are hopeful that she will be able to join our team in April. Matteo will be leaving us at the end of February so your continued patience is requested until our new staff member takes up post.

**Anti-Social Behaviour:** Unfortunately we continue to experience anti-social behaviour on site. We are looking at various measures to prevent this out of hours and the Practice Manager will be contacting the Police Crime Commissioner for advice with both in and out of hour's issues

**Next Meeting Details:** AGM 3rd April 2025 6.30pm in the waiting room at the surgery. Dr Shackleton will speak. If you wish to join our meetings, please email our chairman [s.j.gilson@btinternet.com](mailto:s.j.gilson@btinternet.com). Or speak to reception.

## NAAFI Break

First Wednesday of every month from 10am to 11am,  
in the cafe at Anglesey Abbey  
Quy Road, Lode, Cambridge,  
Cambridgeshire, CB25 9EJ



Come along, for a good old chin wag, meet new faces and feel  
connected within your local community.  
Gary looks forward to welcoming you.  
He will be wearing a Help for Heroes T Shirt.



## FOUR SEASONS

PROFESSIONAL TREE SERVICES

Qualified & Professional Tree and Client Care

PRUNING | LOPPING | FELLING  
PLANTING | REDUCING & RESHAPING  
CROWN RAISING | HEDGETRIMMING  
THINNING | POLLARDING | STUMP REMOVAL  
OVERGROWN GARDENS PUT EACH IN SHAPE  
FRUIT TREES TREATED  
LOG & WOODCHIP SALES

FREE ESTIMATES & ADVICE  
WITH NO OBLIGATION

For quality jobs at a competitive price  
01353 721665 - Mob 07771 707921

All work carried out to BS 3998 Standard  
A genuine family business  
est. for over 30 years - Fully insured

The Name you can trust.

# Chiropody

## In your own home

**Save £5**  
off your first treatment  
when you present this advert.

Call **01638 814174** for an appointment

**Daniel Harris BSc Hons MChS**  
Fully qualified and Registered with Health Care Professions Council

## *Bottisham Bird Brain*

As winter draws to a close, my next bird is another common passerine, frequently seen in and around your gardens, parks, fields, trees and scrub. Once known as the ‘Proud Tailor’ due to its smart, colourful ‘patchwork’ plumage (also ‘Flame of the Forest’ in Ireland), the Goldfinch is one of our commonest finches having enjoyed a population boom in recent decades similar to that of last month’s Long-tailed Tit.



The Goldfinch – *Carduelis carduelis* – is instantly recognisable as a member of the Finch family by virtue of its deep, stout bill. You may remember from previous articles that you can have a pretty good guess at a bird’s diet by the shape of its beak... insect eaters will have a slim, pointed bill; seed eaters have a thick, almost triangular shaped bill, omnivores possess something in between and, of course, raptors have a hooked bill for tearing meat. (You will know that water birds have a whole different range of bill shapes: longish in the case of waders; flat or pointy in the case of ducks; strong and well-built in the case of gulls and their relatives; but we can return to them another time.)

The Goldfinch is certainly a striking individual when you get a good sight of it. Like many small birds constantly foraging for food, it doesn’t sit still for long, and often you may only see a partial view or silhouette if it is feeding high in the foliage; but on the garden feeder or in the bushes you will observe the golden-brown back, black and yellow wings, black and white head and bright red face. The other feature worth noting, which indicates its family in case other features aren’t visible, is the cleft tail. (I’ll often ask about tail length and shape when people are asking me to identify something they’ve seen. If you want to identify an unfamiliar bird, it’s best to view it as a series of individual features, rather than a general description of size and overall colour!)

You may sometimes hear Goldfinches before you see them. They will often be feeding in trees, bushes or low scrub, in small flocks and will be twittering incessantly while they search for the seeds of thistle, teasel, amaranth, dandelion, chickweed, annual bluegrass, ryegrass, paspalum and other herbs. Insects also provide some easy pickings in the summer months. Additionally, the male will sing to the female during courtship, before embarking on a monogamous relationship which results in up to five or six hatchlings – sometimes twice per year – to be fed by both parents until they leave the nest.

A seemingly happy bird, the Goldfinch in the UK and Europe is variously associated with love, romance, wealth, joy and – in Renaissance paintings – the human soul. In Irish folklore, Goldfinches congregate wherever fairies have their home, a probable connection with the widely accepted collective noun: ‘charm’.

Throughout the centuries, the Goldfinch has captured the imagination of such figures as Geoffrey Chaucer (“I am as gaillard [happy] as a goldfynch in the shawe [woods]”) and Leonardo Da Vinci (“...if the sick man is going to die, the bird turns away its head and never looks at him; but if the sick man is to be saved the bird never loses sight of him.”)

*(Continued on page 21)*



# Hello neighbour

Bottisham's Co-op is open



**Find us here:**

12 High Street, Bottisham,  
Cambridge CB25 9DA

**Open 6.30am - 10pm, daily**



**It's what we do**

*(Continued from page 19)*

And going back further, Goldfinches have been depicted as a symbol for the Resurrection, the red on the face said to originate from a splash of blood from when a Goldfinch plucked a thorn from Jesus' head! It is not known whether the bird's Anglo-Saxon name 'thistle-tweaker' [thistle tweaker] is a reference to this belief or the Goldfinch's favoured diet.

By the way, a rare but close relative of the Goldfinch – the much larger Hawfinch - *Coccothraustes coccothraustes* – has been seen in considerable numbers in various parts of England this winter, and I believe a single adult hung around Milton Country Park for a while a couple of months ago. And a flock of 50 was reported in Worcestershire as recently as mid-February. This is somewhat frustrating for me, personally, as the Hawfinch is one of my 'bogie birds'. i.e. I've never seen one! So, if anyone spots a large finch with an oversized bill, locally, I ask you please, please to get in touch!

*TTFN - Gerry Daish*

The redcap is a painted bird  
and beautiful its feathers are;  
In early spring its voice is heard  
While searching thistles brown and bare...

John Clare (who else?!)



As you read this it will only be a month before the Museum opens on Sunday 6th April 2025. We are looking forward to welcoming you all for the new season.

The Flying Tractor Café has a new manager, Sophie, who along with her team has some exciting new ideas for snacks and drinks to tempt you. You may ask why it is called the Flying Tractor Café. Well, on the back wall behind Sophie and counter is a painting of a Flying Tractor. This was painted by an American airman during their stay in Bottisham during WW2. The whole wall with painting was removed from a building called the Aero Club, that used to stand where the housing estate on Thomas Christian Way now is. The painting – and the wall - was removed by a group of volunteers and was stored at a museum in Norfolk until such time it could be displayed.

The current Café stands exactly where one was on the Airfield during WW2, the original one being demolished after the war. The wall now forms the back of the café.

So if you are passing on a Sunday or Wednesday and are looking for somewhere to have a hot or cold drink and maybe a cream tea or sandwiches please call in. You don't have to pay museum entrance fees. Just look for the green building with the picnic tables outside.

Of course, if you want to tour the museum enter through the shop opposite the carpark entrance. Entry is £5 adults and under 16s free and can be purchased in the shop or the café, Gift Aid giving is available.

We have many events happening during the course of the year, please check our website to keep up to date [www.bottishamairfieldmuseum.org.uk](http://www.bottishamairfieldmuseum.org.uk)

*Charles Cook - Museum Volunteer.*

# MARTIN BALL

FIREWOOD & TIMBER

[www.martinballfirewood.co.uk](http://www.martinballfirewood.co.uk)

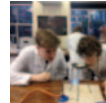
[sales@martinballfirewood.co.uk](mailto:sales@martinballfirewood.co.uk)

Office • 01799 586 513  
Woodyard • 01371 830 503  
Mobile • 07980 258 003

Blunts Farm Yard  
Thaxted  
CM6 3PX



## LANDMARK INTERNATIONAL SCHOOL



A small international school in Fulbourn, South of Cambridge,  
**welcoming pupils aged from 4 to 16 years.**

We have experienced and enthusiastic teachers delivering a broad and engaging curriculum to small classes of pupils from Britain and beyond. We offer excellent pastoral care and are non-selective academically. Transport via school minibuses from central Cambridge and surrounding villages.

*To arrange a visit, please call:*

**Mary Greer on 01223 755100/07400 584015**

or email [mary.greer@landmarkinternationalschool.co.uk](mailto:mary.greer@landmarkinternationalschool.co.uk)

[www.landmarkinternationalschool.co.uk](http://www.landmarkinternationalschool.co.uk)

Landmark International School is a registered charity.



## PEACEFUL & PRAYERFUL ART GROUP FOR ADULTS

Please note new dates and location:

**Tuesdays (from 11 March)**

**10:30am – 12:30pm**

**St James' Church, Lode**

**Those of all faiths or none are WELCOME!**

No art experience necessary.

Support given to get started if required.

A wide range of art materials supplied:

Charcoal / felt tips / pencils / crayons  
watercolour pencils / paints / pastels



**Help your local community – become an on-call firefighter!**

Cambridgeshire Fire and Rescue Service is looking to recruit more on-call firefighters to help local communities by responding to emergencies.

On-call firefighters are a vital part of your fire and rescue service. They respond to a wide range of incidents, from fighting fires and attending road traffic collisions to rescuing people and animals in need. They also respond to medical emergencies.

In addition to responding to emergency incidents, on-call firefighters support their communities by providing a range of safety advice helping people to keep safe in their homes.

Being an on-call firefighter has many benefits. As well as being paid an annual wage and for the time spent at incidents or training, there are also opportunities to develop first aid skills and heavy good vehicle driving qualifications.

Find out more about becoming an on-call firefighter by visiting our website: <https://bit.ly/CFRSONcall>.

**Help keep your home and family fire safe – complete our online home safety check**

You can carry out your own home fire safety check online by visiting the Cambridgeshire Fire and Rescue Service website.

The online home safety check helps you carry out your own fire risk assessment and is a simple way to help reduce risks and keep your home safe from fire. It takes you through some simple questions about you and your home, then provides an action plan that you can download and print. You can fill it in for yourself or a member of your family that might need help.

Visit [https://bit.ly/Home\\_Safety\\_Check](https://bit.ly/Home_Safety_Check) to find out more and start your online home safety check.

**Consider where you park!**

Motorists are urged to take care when parking their vehicles so they do not prevent our fire engines from attending potentially life-threatening emergencies. There are some areas around the county that are notorious for motorists parking down both sides of a narrow street and there have been times when fire engines haven't been able to get past at all. This of course can cause us a significant delay in responding to emergencies where someone's life could be at risk and our attendance time is crucial.

This is a growing problem due in part to increasing car ownership, reduced or unused resident parking areas, traffic calming schemes and thoughtless parking by some motorists. The problem can be compounded at night and during the school pick-up and drop-off times. The average fire engine is 2.6 metres (nine feet) wide and 8 metres (26 feet) long - when you park your vehicle in a narrow street, always check you have left enough room for a fire engine to get past.



# DRAIN-PLUMB

*Plumbing, Heating & Drain  
Services*

## BLOCKED DRAINS CLEARED

- Gas Boiler Service & Maintenance
- Power Flushing of Boilers & Heating Systems
- Home Buyers CCTV Drain & Plumbing Surveys
- All Plumbing & Heating Repairs/Alterations
- All work Guaranteed

TEL: 01638 742873  
MOB: 07932 773515

7 NESS ROAD,  
BURWELL  
CAMBRIDGE, CB25 0AA

## TV AERIALS

## SATELLITE

## DIGITAL FREEVIEW

Installations  
Extra points etc.  
Tuning in of TVs, Digiboxes etc.

Experienced local engineer  
**RICHARD FORTEY**  
**01638 662119**

No Call Out Charge

## *Public Transport Matters*

Back last October I wrote about the Consultation that Cambridgeshire and Peterborough Combined Authority (CPCA) was running on whether or not the region's bus services should be run under a system of Franchising - and therefore specified by the Local Authority (as happens in London, in Jersey, and now in Greater Manchester). The alternative was that they should continue to be run under the present, largely 'free-market', system.

Well, the consultation results were that 63% of more than 1,600 respondents were in favour of Franchising. And, following that, the Mayor of CPCA, Nik Johnson, has just signed off plans to introduce Franchising, which CPCA describes as a "major step" towards more reliable bus travel, and "one of the most significant moments for local public transport in decades".

The Mayor says that "It gives us the power to design a network that works for the people of Cambridgeshire and Peterborough, with better routes, more frequent services, and a focus on connectivity, not just what's profitable for operators."

There are a number of reasons why Franchising is very welcome in principle. Firstly, Franchising requires CPCA Officers and Councillors to develop a long-term clear Vision for Cambridgeshire & Peterborough bus provision. Secondly, it then enables the development of an improved, integrated network model to deliver that Vision - and therefore better public transport for all of us. Without Franchising these are much harder to do, and in some cases may be next-to-impossible.

HOWEVER, in its response to the Consultation the A2B1102 Group stressed that in order to make Franchising a success the County Council / CPCA will need to change their approach to protecting road space and land use for bus priority lanes. Franchising can only deliver if buses have priority in bottleneck / congestion areas! Another requirement, of course, is the money to pay for extra bus facilities (stops, information etc.), and the frequencies implied by the CPCA Vision, as well as the necessary high-quality teams of staff needed to deliver that Vision efficiently.

So, franchising on its own is not a Silver Bullet, and other things must happen alongside it to enable a better bus service. But one welcome aspect of the particular Franchising approach that CPCA is adopting is CPCA's stated intention to work closely with bus operators to plan the bus network, as happens in Jersey. This helps ensure that the bus route and service plans designed under Franchising are both matched to current patterns of traveller needs and are practical to operate.

The first routes run under the Franchising system could begin in late 2027. In the period up to full transition, CPCA will continue its work on bus services - including the retendering process for our area's planned new bus services T4 and T5. We hope for a positive outcome to that particular process soon.

HAPPY TRAVELLING

**National Traveline Enquiries (for bus services) - [www.traveline.info](http://www.traveline.info) or 0871 200 22 33 (a Premium-rate service)**

**National Rail Enquiries - [www.nationalrail.co.uk](http://www.nationalrail.co.uk) or 03457 48 49 50**

*John Austin*

# M&P

## LANDSCAPE AND DESIGN

Patios, Block Paving, Fencing,  
Turving and all Gardening needs.

References available on request.

Local tradesman • Free estimates

PLEASE CALL

**01223 811144**

MOB **07837 358550**

## N & G Marsh of Burwell

Specialising in bespoke metalwork  
and engineering

- ❖ Welding services
- ❖ Handrails
- ❖ Gates
- ❖ Metal railings
- ❖ Tow Bars
- ❖ Mower repairs
- ❖ RSJs supplies

Services to Building  
and Agricultural Industries

Brian Marsh Engineer

Tel. 01638 741354 Mob. 07519 493664

E: [Bookings@themeadowhouse.co.uk](mailto:Bookings@themeadowhouse.co.uk)

W: [www.n-g-marsh.co.uk](http://www.n-g-marsh.co.uk)

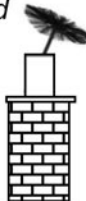
Unit 12, Meadow Ind. Estate  
Reach Rd., Burwell, CB25 0GH

## **R. BRISTLEY** Est. 1974

9 Collings. Place Newmarket CB8 0EX

### **BRUSH ELECTRIC SWEEP**

- All Chimneys swept
- Solid Fuel, Oil and Gas
- Cows, Nets and Pots fitted
- Carpets Cleaned
- Stoves Serviced
- Competitive Prices
- Very Clean
- Public Liability Insurance



also Classic Wedding Car Hire  
White Citroen DS21

Tel: 01638 662439  
[www.rbristley.co.uk](http://www.rbristley.co.uk)

## **BED AND BREAKFAST**

### **THE MEADOW HOUSE**

2A High Street, Burwell,  
Cambridge. CB25 0HB



- En-suite rooms with colour TV.
  - Large car park and grounds.
  - Family rooms, children welcome.
  - English Tourist Board 4 Diamonds.
- Self catering cottage also available  
at Swaffham Prior.*

Brian & Hilary Marsh

Tel: 01638 741926 Mobile: 07519 493664

Email: [Bookings@themeadowhouse.co.uk](mailto:Bookings@themeadowhouse.co.uk)

Website: [www.themeadowhouse.co.uk](http://www.themeadowhouse.co.uk)

## *Anglesey Abbey*

### **SHAUN THE SHEEP TRAIL FROM 1 MARCH TO 27 APRIL**

Get ready for a baa-rilliant day out as Shaun the Sheep comes to Anglesey Abbey this spring. Pick up a trail map and embaa-rk on a journey around the gardens in search of twelve ewe-niquely designed Shaun the Sheep sculptures. The Find the Flock trail is put on in collaboration with Wild in Art and Aardman animations and is suitable for the whole family. The trail is free but please note that normal admission to Anglesey Abbey applies. We hope you enjoy seeing the bright and funky Shaun the Sheep sculptures standing tall around the gardens.



### **SPECIALIST DAFFODIL TOURS FROM 17 MARCH TO 17 APRIL**

This year, get ready to see thousands of new daffodils appear that were planted in the autumn of 2024 such as Narcissus 'Dutch Master' and 'Rijnveld's Early Sensation'. You can also join one of our knowledgeable garden guides on a tour to find out more about the exciting collection of daffodils here at Anglesey Abbey. With over 40 varieties to spot across the estate, this tour gives you insight into the subtle differences between the daffodils and a little bit about the history behind them.

### **WOMEN ARTISTS AND DESIGNERS FROM 1 MARCH TO 1 JUNE**

In the House this spring, you can also discover more about some of the objects, books, sculptures and jewellery made by female artists and designers with connections to Anglesey Abbey. This exhibition trail will take place in the House and finish in the gardens.

### **COMING UP: EASTER ADVENTURES FROM 5 TO 21 APRIL**

£3.50 per trail, Easter egg included, normal admission applies

How far can you throw the farmer's welly boot, and can you carry your sheep to safety through the mini obstacle course? Find out more here: [nationaltrust.org.uk/anglesey-abbey](http://nationaltrust.org.uk/anglesey-abbey)

## *Bottisham WI*

### **Our next meeting will be our AGM on Tuesday 18th March at 7.30pm.**

At our January meeting Charles from the Gog Shop talked to us about the business which was started by his great grandfather in 1919 at Heath Farm in Wandlebury. A great deal has changed since then and Charles explained how he has transformed the business into an attractive destination for those looking for premium products. There was a wide variety of samples for us to try: local cheeses, pork pie, dark chocolate and English sparkling wine. Charles had also brought some delicious items for our raffle at the end of the evening.

.We usually meet on the third Tuesday of every month at the Bottisham Community Sports and Social Club in the Poppy Room at 7.30pm. Talks are followed by refreshments offering the opportunity to meet and chat to others. We also have a number of smaller groups which meet at other times during the month to pursue a variety of cultural activities and support local charities.

*Jennifer Clark*

Have you ever stopped of a morning to sit down to have a cup of coffee in the house on your own, and thought it would be nice to talk to somebody?  
Well you can and very easily too. Come along to Meeting point on a Wednesday and have that cup of coffee with like-minded company



**in the Poppy Room at the  
Bottisham Community Sports  
and Social Club**

A place where you can meet old friends  
make new friends, relax, chat and enjoy  
coffee, cake and biscuits in a friendly  
relaxed atmosphere.

**EVERYONE WELCOME**

**ADMISSION FREE**

**PREMIER INVESTMENT MANAGEMENT SERVICES LTD**

INDEPENDENT INVESTMENT ADVISERS Authorised &  
Regulated by the Financial Conducts Authority

Specialist in Isa's & Isa Transfer's  
Investment Planning & Portfolio Management

To arrange a free consultation ring **01223-882422** or email  
**pims@globalnet.co.uk** or visit **www.pims-uk.com**

**L BOTTISHAM**

**SCHOOL OF MOTORING**

**Tel: 811556**

*All qualified instructors  
with extremely high  
1st time pass rates*

## ***Bottisham and District Gardening Club***

At our January meeting we were treated to Part 2 of The Farm Boy who Became a Cambridge Detective. Denis “Digger” Moules was a serving officer when the initials PC were still associated with law and order rather than political correctness or personal computers. He started his career at Wisbech, later moving to Bottisham and becoming a detective.

“Digger” has had to deal with a wide range of problems and situations during his career, some of which you could not make up. The missing family dog that was found deceased in a Chinese restaurant. The naked wader who had to be flushed out of the reeds with the aid of a dog and his handler. The danger of stealing parrots who can identify their owners and call them by their name. Most amusing was when, while on holiday, he inadvertently shut his car keys in the boot and had to resort to the tricks learned in the course of his work to break into his car to retrieve them. He later found that he had been watched by a budding criminal who was envious of his talents and wanted to recruit him to nick a Cortina. Production of his warrant card soon persuaded the chap to withdraw his offer. He knew many of the local characters, most now sadly passed, when policing was done on a much more personal basis.

He was based at Bottisham when the Police Station was in Bell Road in the days when many problems were resolved with a “quiet word.”

These days he has taken on gentler pursuits and illustrated his talk with pictures of the Fens taken whilst pursuing his hobby of fishing.

We look forward to welcoming Barry Robertson on the 25th of March to talk about ‘Science, Plants and Us’ and hope you can join us. We meet in the Poppy Room of the Bottisham Community Sports and Social Club at 7.30 p.m.

*Margret Coles*



## ***Anglesey Group Mothers' Union***

For our first meeting of the New Year on 16th January 2025 we joined the usual Thursday morning Communion Service at Lode Church, followed by a warming lunch of homemade soup, rolls and cake, which was greatly enjoyed. Donations raised £138 for the Mothers' Union Holiday scheme AFIA (Away From It All). This scheme provides breaks for families who may be experiencing stress or difficulties in life – on average 2,500 people are helped in this way across the UK and Ireland every year.

Our next meeting will take place on **Thursday 20th March at the Fassage Hall in Lode at 2.30pm**, when we shall be thinking about Lady Day (this year taking place on **23rd March**) and enjoying a Spring Social and Bring and Buy.

**All are welcome to join us.**

*Alison Martin*

**Copy deadline for the next issue is 14 March.**

*Please send material to the editor at [BottishamCresset@gmail.com](mailto:BottishamCresset@gmail.com)*





## Simple, Safe and Secure

Self Storage for your Business or Home

No Long Term Commitment

Personalised entry with unique key fob and Extensive 24hr CCTV  
Convenient vehicle access to all units for easy loading and unloading.



Please call 01223 901 021 or email us at [admin@camstorage.co.uk](mailto:admin@camstorage.co.uk)  
[www.camstorage.co.uk](http://www.camstorage.co.uk)



01638 428 060

01223 832 928

[www.Rothwells.biz](http://www.Rothwells.biz)

## Carpet Cleaning

### Stone Floor, Upholstery & Rug Cleaning.

*A few points that make us stand out from the others,*

Rothwell's has been in business since 1993.

We're an honest local family firm.

Our large truck mounted machines mean more cleaning  
& drying power for the best results possible.

Members of both the NCCA and TACCA.

We will move the furniture for a thorough clean.

100% satisfaction or it's FREE.

*Call Oliver and Max Campbell for expert help today.*

Rothwell's, Malting End, Kirtling, Newmarket, CB8 9HH



## 25 Years of Red2Green

On the 25th of February 2000 Red2Green became a registered charity and the rest is history! We are thrilled to be celebrating such a big milestone this year and have lots of exciting events filling up our 2025 calendar. Keep an eye out for more details on our Facebook and Instagram pages. @red2greenuk

We are kicking things off with a Pub Quiz in aid of Red2Green at the Black Horse in Swaffham Bulbeck on the 19th of March 2025 at 7pm. £3 per person, 6 people per team and a prize to be won! There will be a £10 menu on the day. To guarantee your team's space, call the Black Horse on 01223 811 336 to book. We cannot wait to see you all there!

### LOCAL TALKS

Over the past couple months our CEO, Liz Taylor, has visited some of the local groups and delivered talks on various topics such as 'Gardening and its Role at Red2Green' for Swaffham Prior Gardeners Club and 'Autism in Girls' for Lode Women's Institute. It has been an absolute pleasure to present for these groups and we hope to continue spreading awareness about Autism and Learning Disabilities and the specific work we do at Red2Green in the local community. If you are part of a local group and feel a Red2Green talk or training session would be something of interest, please get in touch to arrange. Email us at [info@red2green.org](mailto:info@red2green.org)

### HOW CAN YOU HELP?

There are lots of ways you can help support Red2Green:

- Volunteering opportunities
- Start a fundraiser in aid of Red2Green
- Visit our Community Garden in Bottisham and buy some plants (Mon-Fri, 9:30-4)
- One-off or monthly donations
- Sign up to our monthly newsletter
- Follow our social media pages and keep up to date with all things Red2Green

For more information about the wonderful work we do at Red2Green, please visit our website [red2green.org](http://red2green.org) or if you want to get in touch, feel free to email us at [info@red2green.org](mailto:info@red2green.org) or call us on 01223 811 662.

---

**Copy deadline for next issue is 14 March.**

*Please send material to the editor  
at [BottishamCresset@gmail.com](mailto:BottishamCresset@gmail.com)*

## OvenPad Cleaning Services

I will professionally & efficiently clean ovens, ranges, Agas, ceramic hobs, extractors, microwaves and BBQs.

**It's a dirty job, why not give me a call?**

Contact **Paddy Kelly** on  
Tel: 01638 742703  
Mob: 07752 631343  
Email: info@ovenpad.com  
Website: www.ovenpad.com

## ANDREW EVANS

01954 780 999 – 01223 864335

email: andrew@omegaclean.co.uk  
www.omegaclean.co.uk

- ✓ Carpet Cleaning
- ✓ Upholstery Cleaning
- ✓ Tile & Grout Cleaning
- ✓ Leather Cleaning
- ✓ Oriental Rug Cleaning
- ✓ Carpet & Fabric Protection
- ✓ Allergy Relief Treatment
- ✓ Odour Eradication
- ✓ Stain Removal
- ✓ Carpet Fitting

Family Business Since 1980



# PEST PROBLEM?

CALL DRE PEST CONTROL

01954 230708

07789 502556

- Commercial & Residential
- One - off Call Outs
- Management Contracts

Cambridge & surrounding areas  
www.drepestcontrol.co.uk





ONG

“Successful entrepreneurs are givers and not takers of positive energy.” ANONYMOUS

**codge.com**  
**info@codge.com**  
**01449 675 548**

**Design & Origination • Website Design & Maintenance • Email Marketing • Digital Publishing • Logo Creation • Cartoons & Illustrations • Theatrical, Product Photography & Retouching • Business Stationery • Promotional Flyers & Posters • Newsletters & Magazines • Programs & Catalogues • Books & Brochures • Calendars • Reports • Signage, Displays & Banners • Personal & Wedding Stationery • Mac Training**

## **Cambridge Cats Protection Making a better life for cats**

Call 01223 528 312 to provide a forever home for a cat or kitten in our care. For neutering advice call 01223 236 188.

**enquiries@cambridge.cats.org.uk | cats.org.uk/cambridge**

We are run solely by volunteers and appreciate your patience at busy times.



Cats Protection is a registered charity 203644 (England and Wales), SC037711 (Scotland) and is listed as a Section 167 Institution by the Charity Commission of Northern Ireland. BC\_1770

# Tutor



Experienced tutor:  
Fully qualified former primary school  
teacher and home educator based in  
Little Wilbraham

Expertise in:  
Primary  
Key Stage 3: Maths, English,  
History & Geography  
Study skills & revision techniques

For information and to arrange a free  
meeting/consultation contact:

Anne-Marie McCubbin BA(Hons) PGCE  
email: [info@wingstoflyeducation.co.uk](mailto:info@wingstoflyeducation.co.uk)  
tel: 01223 811939

# BURWELL COMPUTERS

SUPPORT • SALES • REPAIRS

☎ 01638 505930

☎ 07901 556895

[support@burwellcomputers.co.uk](mailto:support@burwellcomputers.co.uk)  
[www.burwellcomputers.co.uk](http://www.burwellcomputers.co.uk)



An accountancy  
service that covers  
everything your  
business needs

For more details contact Paul on

✉ [info@cb25accounting.co.uk](mailto:info@cb25accounting.co.uk)

☎ 07803 782423     [cb25accounting](https://www.facebook.com/cb25accounting)



Sales, servicing, repairs and sharpening  
of all types of garden machinery.

Collection and delivery available.

Friendly, local and professional service.



C.W. KIRK LAWNMOWERS

01638 744 349

[CWKIRKLAWNMOVERS.CO.UK](http://CWKIRKLAWNMOVERS.CO.UK)

44 NEWMARKET ROAD BURWELL CAMBRIDGESHIRE CB25 0AE



# Village Litter Picks 2025

Fresh air, friendship and  
looking after our wildlife

*Bring your gloves and join us for refreshments afterwards*

Starting Location	Date	Month
Bottisham Village College (sports centre car park end)	12	April
Queens Court Care Home	10	May
Bottisham Community, Sports & Social	7	June
Bottisham Village College (sports centre car park end)	12	July

Further Information:

All events, once a month on a Saturday, starting at 10:00am

Ways to keep in touch with updates:

- ✓ Join the [Bottisham Village Litter Pick WhatsApp Group](#)
- ✓ Visit either the [Bottisham Events Facebook Page](#)
- ✓ Visit the [Bottisham Community Group Facebook Page](#)

## BOTTISHAM LOCAL CHARITIES

# VACANCY

Bottisham Local Charities is a charity for those in need of financial assistance. Due to a retirement they are looking to appoint a trustee to act in the distribution of the charity's funds. This is a voluntary position and the charity generally has three meetings a year.

Applicants should have been resident in Bottisham for a minimum of two years and be responsible and of good character. They should be compassionate and be involved in and have contacts with the local community.

Applications and enquiries should be submitted by 31st March to the Clerk, Jonathan Barrett, who can be contacted on 01223 813774 or 0792 042 5154 or email:

[bottishamlocalcharities@gmail.com](mailto:bottishamlocalcharities@gmail.com)

*Bottisham Local Charities*

## Bob Newman & Sons

*Piano Tuner*

Experts in all aspects of piano tuning,  
restoration and repair work



Please contact us to discuss your requirements

Mobile: 07736 411066 (Bob)

07786 988175 (Matt)

Email: bob@bobnewmanandsons.co.uk

Web: bobnewmanandsons.co.uk  
(online booking for tunings available)

## Derren Heath Electrical

Napit registered electrician based in Bottisham  
All domestic and commercial electrical work undertaken.

Rewires, new builds and extensions.

New sockets.

New lighting.

Electrical safety condition reports.

Fault finding.

Electric vehicle charging points.

Replacing old fuse boxes.

Free quotes.

Tel: 07788911892

Email: dhelectrical@hotmail.co.uk

Bottisham, Cambridge, Cambridgeshire.



## FLOOR COVERINGS

Cambridgeshire's largest flooring  
showroom est. 1996

FREE no obligation quotes.

01223 233233

[www.floor-coverings.net](http://www.floor-coverings.net)



Unit 31-32 Dry Drayton Industries, Scotland Road,  
Dry Drayton, Cambridge CB23 8AT  
Open: Mon - Sat 9-5

## S. NEAL Carpentry and Small Works

Offering a high quality  
carpentry and small works  
service in Bottisham and  
the surrounding area.

FLOORING • HANGING NEW DOORS  
KITCHEN RENOVATIONS • DECORATING •  
TILING • LANDSCAPING  
BESPOKE CARPENTRY



07703 043243

SNealCarpentry@Gmail.com  
@S.Nealcarpentry



HILTON PARK

BARCHESTER HEALTHCARE

# Care as unique as you are



Making the move into care doesn't mean you have to lose who you are. We'll spend time getting to know you, and the people and things that are most important to you, so we can put the right care in place.

By gaining an understanding of your interests and passions too, we can support you to live happily, comfortably, and just the way you choose.

**You'll find all this and more at Hilton Park Care Home.**

**Call: 01223 659 832**

Bottisham, Cambridge, CB25 9BX

To find out how we can help you, visit: [barchester.com/HiltonPark1](https://www.barchester.com/HiltonPark1)

**Residential care • Nursing care • Respite care & short breaks**

# Bottisham Vehicle Services Ltd

Reliable, Friendly, Professional

Service and repairs to all makes,  
MOT testing, tyres, air conditioning  
Courtesy car available  
Local collection and delivery

10 Tunbridge Lane, Bottisham, Cambridge CB25 9DU  
01223 811919 • [simon@bvsltd.net](mailto:simon@bvsltd.net) • [www.bvsltd.net](http://www.bvsltd.net)

## WANTED

**ALL TYPES OF ANTIQUES, CURIOS & COLLECTABLES  
POLITE, LOCAL BUSINESS EST. OVER 25 YEARS  
IS LOOKING TO BUY THE FOLLOWING:**

- Old watches, clocks, scientific instruments ● Quality jewellery, costume jewellery, even items in need of repair ● Silver, silver plate, old copper & brass ● Glass, ceramics, china ● Militaria, weapons, medals, badges, uniforms, paperwork & photos ● Tribal art – masks, weapons ● Walking canes, sword sticks ● Sporting memorabilia ● Old toys, games and train sets ● Vinyl albums and singles ● Woodworking tools ● Furniture – antique up to 1970s

Anything considered – give me a call before you throw it away  
POLITE & CONFIDENTIAL SERVICE. GOOD PRICES PAID.

STEVE DURRANT 01638 507037 OR 07740 591194

Email: [svdservices51@gmail.com](mailto:svdservices51@gmail.com)



# THE BELL BOTTISHAM



## CAFE



*Come and visit it us at The Bell!*

Serving barista coffee, delicious cakes  
freshly made hot and cold breakfasts

Lunchtime soups, sandwiches, jackets and  
burgers



*Takeaway coffee, cake, sandwiches,  
bacon & sausage baps*

Parking available at the rear of the pub  
on Bell Road

# ANGLIA TREE CARE

**LARGE ENOUGH TO COPE • SMALL ENOUGH TO CARE**

80% OF OUR WORK IS VIA RECOMMENDATIONS  
TREE SURGERY & FELLING • HEDGE MAINTENANCE  
STUMP GRINDING • FULLY QUALIFIED  
FULLY INSURED • 24/7 SERVICE  
All work carried out to BS 3998

**Free Estimates Given within 7 days**

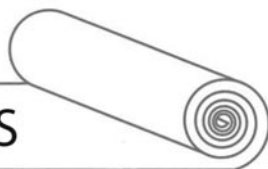


Tel. 01223 424454 • [INFO@ANGLIATREECARE.CO.UK](mailto:INFO@ANGLIATREECARE.CO.UK)

**M E M B E R**  
Guild of Master Craftsmen

## PETER FISHER

CARPETS - WOODS - VINYL



A wide range of floorings supplied and fitted.  
Please call for a free estimate and select in your home.

Tel: (Bottisham) **01223 811321**  
Mobile: **07879 494 685**

*Great service for*  
**30** years



# J&J DRAKE



## Fully approved electrical contractor

- All Work Certificated in Accordance with NICEIC
- Free no obligation quotations
- All aspects of electrical work undertaken such as re-wires, Periodic test and inspections, maintenance calls, New build Installations.
- However small you may consider your job it will be treated with the same attention to detail as every one of our jobs.

## Your Local Electrician

Unit 24, Hall Barn Road Industrial Estate, Isleham, Ely, Cambs. CB7 5RJ  
 Contact us on: 01638 781567 / enquiries@jandjdrake.co.uk



## N.C.S.

**BRUSH ELECTRIC SWEEP  
 ALL CHIMNEYS SWEPT**

- BIRDS NESTS REMOVED
- OIL & GAS BOILERS
- SOLID FUEL, STOVES FITTED
- SMOKE PRESSURE TESTING
- INSECT MESH, POTS, COWLS
- FLUE LINERS SUPPLIED & FITTED
- BIRD GUARDS & TERMINAL FITTED
- GUTTERS CLEANED & REPAIRED
- GENERAL PLUMBING WORK

**FOR FREE QUOTE CALL  
 07824 727277 or 01638 662760**

EMAIL  
**NCS.NEWMARKET@YAHOO.CO.UK**  
 WEBSITE  
**www.ncsnewmarket.co.uk**

\*Send text or e-mail for 10% discount  
 Answers within an hour. • Waiting time approx. 1-2 weeks

**VERY CLEAN • Public liability insurance  
 - Competitive rates -**

*The Lake District - Eden vale*



## HOLIDAY COTTAGE

Nr. Penrith Cumbria CA10 1QW  
 AVAILABLE ALL YEAR ROUND

Immaculate and well-equipped modern holiday house, sleeps six, full central heating, double glazing and double garage.

Our holiday home offers every comfort, a real 'home from home' at reasonable rates, in a lovely village location with panoramic views.

**T: 01638 741926 or 741354  
 M: 07519 493664  
 for details**

All weeks £325.00

## DB Electrical & Building Services

Dale Badcock  
07718 122538

dbelectricalandbuilding@gmail.com

All domestic work undertaken

- Rewiring
- Lighting
- Burglar alarms
- Security Lighting
- Lighting design
- Controls specialist
- Renovations
- Alterations
- Kitchens & Bathrooms

91 Northfield Park  
Soham  
CB7 5XA  
01353 720570

[www.DBElectricalandbuilding.co.uk](http://www.DBElectricalandbuilding.co.uk)

## Cambridge & Newmarket Acupuncture Clinic

Dr Liang - Chinese Acupuncture Specialist

**MIGRAINE - ANXIETY - DEPRESSION  
NECK AND SHOULDER PAIN -  
BACK PAIN - SCIATICA  
ARTHRITIS - ANKLE SPRAINS - ASTHMA**

If you are suffering any of these problems, do not hesitate to contact by email or mobile phone to sort it out as soon as possible.

*Initial treatment session about 75 minutes,  
promotion price £65  
Follow up treatment session 50 minutes, £60*

Monday to Friday, from 10am. to 5pm.  
Appointment only. Mobile: 07375 331048

Email:  
[Bottishamacupuncturetherapy@gmail.com](mailto:Bottishamacupuncturetherapy@gmail.com)  
Web: <https://goodpointacupuncture.co.uk>



## TIM PHILLIPS & Co. Accountants

Independent, specialist service for:  
**Small Business • Self Assessment  
Personal Taxation**

Free initial consultation – no obligation  
**EASY, FREE PARKING**

Copley Hill Business Park, Cambridge Rd., Babraham  
Off A1307 between Wandlebury and Babraham

**Tel: 01223 830044. [www.tpaccounts.co.uk](http://www.tpaccounts.co.uk)**

# ARCHITECTURAL DRAWINGS

FOR

PLANNING & BUILDING REGULATION APPLICATIONS

NEW PROPERTIES, EXTENSIONS, LOFT CONVERSIONS ETC

CONTACT US now to arrange a FREE on-site meeting at your convenience to discuss your project.

## ELY DESIGN GROUP

*'Architecture by Professionals'*

[www.elydesigngroup.co.uk](http://www.elydesigngroup.co.uk)

01353 649649

[mail@elydesigngroup.co.uk](mailto:mail@elydesigngroup.co.uk)

## STEPWISE FOOTCARE



### *Clinic-based Podiatry*

ALONGSIDE GENERAL FOOTCARE WE OFFER A RANGE OF SPECIALIST TREATMENTS INCLUDING:

- *Children's foot problems*
- **Lunula Laser™** fungal nail treatment
- **Swift Microwave** for verrucas
- *Biomechanical assessments*
- **MotionMetrix** gait and running analysis
- **SIDAS** bespoke orthotic insoles
- *Diabetic foot care*
- *Nail and minor skin surgery*
- **Wilde-Pedique** toenail reconstruction

**Tel: 01638 741973**

HCPC Registered | RCoP Accredited Practice  
[stepwise-footcare.co.uk](http://stepwise-footcare.co.uk)

Unit 1, 10 Ness Road, Burwell, Cambridge CB25 0AA

## The Upholstery Barn



■ Fulbourn-based upholsterer offering traditional and modern reupholstery, repairs and re-covers

■ Bespoke Curtains, Roman blinds and soft furnishings

### Contact:

Anne McGarvey

T: 07986027807

E: [camupholsterybarn@outlook.com](mailto:camupholsterybarn@outlook.com)

[www.theupholsterybarn.co.uk](http://www.theupholsterybarn.co.uk)



# My Village Handyman Services Ltd

- DIY Repairs & Odd Jobs
- Painting & Decorating
- Tiling & Flooring
- Gardening & Landscaping
- Patios & Decking
- Fencing, Sheds + Garden Studios
- Kitchen & Bathroom Installation
- Gutter Clear and Jet Washing
- Leaking Taps & Plumbing Jobs
- Carpentry & Repairs
- Light Fittings, Sockets & Electrical Works
- Studio & Summer House Builds
- Brickwork & Small Builds
- New Doors or Locks
- Security & Garden Lighting



**If your job is not listed, get in touch I'm sure we can help**  
Free no obligation quotes and advice provided  
Your very local Handyman

Contact us to arrange a visit or quote

Call: 07500876376 or 01223 881700

Email: [info@myvillagehandyman.com](mailto:info@myvillagehandyman.com) Web: [myvillagehandyman.com](http://myvillagehandyman.com)

# K.J.P.

## Building/Maintenance



Including:

Design, landscapes, patios, fencing,  
gardening, decking, painting,  
decorating, tiling, all interior work,  
etc.

Tel: 01223 812021 or  
mobile 07799 504043



## SANICLEAN

DRAIN & PLUMBING SERVICES

**R. BRISTLEY** Est. 1974

9 Collings Place, Newmarket

- *Drains Unblocked Fast*
- *Toilets, Baths and Sinks*
- *Guttering and Downpipes*
- *Drain repairs and CCTV Surveys*
- *High Pressure Water Jetting*
- *Domestic and industrial*
- *All Work Guaranteed*

Newmarket (01638) 662439

Mobile 07970 038404

[www.rbristley.co.uk](http://www.rbristley.co.uk)



# AMS (EA) Ltd

## Driveways, Landscaping & Plant Hire

*Our areas of expertise include:*

- All Driveways & Block Paving • Driveways Cleaning & Sealing**
- **Patios & Paths • Fencing • Drainage • Turfing & Seeding**
  - **Artificial Grass • Site & Garden Clearance (Licenced)**
  - **Grab Hire & Plant Hire • All Aggregates Delivered**

All paving work comes with a **5yr min Guarantee**

Call for **FREE** estimates and bookings:

Please visit our websites for examples of our work & refs:

Office: 01638 721893 or Site: 07789 261266

Newmarket, Cambridge and Ely

[amsdriveways.co.uk](http://amsdriveways.co.uk)



**BRADSTONE**  
Assured

**BrettApproved**  
PAYING EXPERTS YOU CAN TRUST



[amsaggregates.co.uk](http://amsaggregates.co.uk)

[www.amsealtd.com](http://www.amsealtd.com)

# *'Your Friendly, Local Wood Burning Stove Specialist'*



## VISIT OUR SHOWROOM!

Whitelands Farm  
Newmarket Road  
Bottisham  
Cambridge  
CB25 9BD

*Monday – Closed*

*Tuesday – Closed*

*Wednesday – Closed*

*Thursday – 12.30 – 3.00pm*

*Friday - Closed*


*Saturday – 1.30 – 3.30pm\**

*Sunday – Closed*

*(\*Open 1<sup>st</sup> and 3<sup>rd</sup> Sat of the month only, Sept to April)*

Please phone to check for closure during school holidays

Email & telephone enquiries dealt with Monday – Friday 9am – 5pm

 01223 703184

Email: [sarah@cambridgestoves.co.uk](mailto:sarah@cambridgestoves.co.uk)

CALL NOW FOR YOUR FREE, NO OBLIGATION SURVEY AND QUOTATION, OR MAKE AN APPOINTMENT TO VISIT OUR SHOWROOM

ALL ASPECTS OF BUILDING WORKS TO YOUR FIREPLACE UNDERTAKEN

FAST, RELIABLE AND EFFICIENT SERVICE CARRIED OUT BY QUALIFIED HETAS ENGINEERS

LARGE SELECTION OF WOOD BURNING STOVES ON DISPLAY

NOW SELLING SEASONED FIREWOOD!!





**BOTTISHAM COMMUNITY  
LIBRARY ASSOCIATION**

**LIBRARY OPENING HOURS**

TUESDAYS

3.00-5.00 and 6.00-8.00

WEDNESDAYS

10.00-11.30

THURSDAYS

3.00-5.00

FRIDAYS

6.00-8.00

SATURDAYS

10.00-12.00am

*Working in Partnership with the  
County Library Service.*



**Need a little extra  
Financial Help?**

**We don't have a magic money  
tree, but we may be able to help!**

**BOTTISHAM LOCAL CHARITIES**

**\*Bottisham Local Charities can offer  
support to people with a minimum of  
two years residence in the village**

**For further information or an  
application form contact the Clerk:  
bottishamlocalcharities@gmail.com**

**01223 813774 or 0792 042 5154**

**BOTTISHAM PARISH COUNCIL**

**CHAIR - JON OGBORN** \_\_\_\_\_ jon.ogborn@bottisham-pc.gov.uk

**VICE CHAIR NADENE CUNDELL** \_\_\_\_\_ nadene.cundell@bottisham-pc.gov.uk

**PARISH COUNCILLORS**

MARK OVERTON \_\_\_\_\_ mark.overton@bottisham-pc.gov.uk

STEVEN O'DELL \_\_\_\_\_ steven.odell@bottisham-pc.gov.uk

CAMELIA MIHAESCU \_\_\_\_\_ camelia.mihaescu@bottisham-pc.gov.uk

JAWAHAR SWAMINATHAN \_\_\_\_\_ jawahar.swaminathan@bottisham-pc.gov.uk

JOHN AUSTIN \_\_\_\_\_ John.Austin@Bottisham-pc.gov.uk

SAVANNAH LAURENT \_\_\_\_\_ savannah.laurent@bottisham-pc.gov.uk

MARIA SOCEA \_\_\_\_\_ maria.socea@bottisham-pc.gov.uk

REHANA SHAKER \_\_\_\_\_ rehana.shaker@bottisham-pc.gov.uk

KEITH MORRISON \_\_\_\_\_ keith.morrison@bottisham-pc.gov.uk

PARISH CLERK SAM CHAMBERS-TURNER - 41 Stow Road, Quy, CB25 9AD  
\_\_\_\_\_ clerk@bottisham-pc.gov.uk - Tel: 07369248998

**DISTRICT COUNCILLORS**

CHARLOTTE CANE \_\_\_\_\_ charlotte.cane@eastcambs.gov.uk - Tel: 07976 607512

JOHN TRAPP \_\_\_\_\_ john.trapp@eastcambs.gov.uk - Tel: 01223 812120

**COUNTY COUNCILLOR**

ALAN SHARP \_\_\_\_\_ alan.sharp@cambridgeshire.gov.uk - Tel: 07794 292941

## Useful Information

<b>Bottisham Website:</b> .....	www.bottisham-pc.gov.uk
<b>Parish Council Chairman:</b> Jon Ogborn, jon.ogborn@bottisham-pc.gov.uk .....	
<b>Parish Council Clerk:</b> Sam Chambers-Turner, clerk@bottisham-pc.gov.uk .....	07369 248998
<b>Holy Trinity Church:</b> Vicar: Rev. Max Osborne max9@btinternet.com .....	01223 481187
Churchwarden: Stuart Field .....	01223 604019
<b>Roman Catholic Priest:</b> Monsignor Eugène Harkness. Parish of St Philip Howard .....	01223 211235
<b>RE:NEW/Lode Chapel:</b> Rev. Alan Brand .....	01223 812558
<b>Bottisham Surgery:</b> Enquiries and Appointments .....	810030
Out of Hours only - Urgentcare Cambridge .....	111
<b>Bottisham Library:</b> Library hours, <i>see advert previous page</i> .....	01223 812354
<b>Cambridgeshire Police HQ:</b> .....	01480 456111
<b>Cambridgeshire Police:</b> (NON-URGENT MATTERS) .....	ring 101
In EMERGENCIES .....	ring 999
<b>Local East Cambs Policing info:</b> www.cambs.police.uk/Neighbourhood-Policing/East-Cambs	
<b>NAAFI Break:</b> Gary Fairbairn .....	korum694@gmail.com
<b>Neighbourhood watch co-ordinator:</b> kevin.g.evans@ntlworld.com .....	01353 614892
<b>Bottisham Pharmacy:</b> .....	812321
<b>Bottisham Community Sports and Social Club:</b> Secretary Bev Clowes, Bottishamcasc@gmail.com .....	812063
<b>Bottisham Community Primary School:</b> .....	811235
<b>Bottisham Village College, School:</b> .....	811250
Evening Classes, Clubs and Youth Club Information .....	811372
<b>Bottisham W.I.:</b> Secretary - Jenn White • mrandjw@btinternet.com .....	811600
<b>Bottisham Scout Group:</b> Group Contact: Linda Jones .....	813040
<b>1st Bottisham Rainbows/1st Bottisham Brownies:</b> Kay Pearce .....	811055
<b>Girlguiding Bottisham District:</b> Cambs County office • www.cambseastguides.org.uk .....	01223 813917
<b>Bottisham &amp; District Gardening Club:</b> Secretary: Julia Green .....	811467
<b>Bottisham Bowling Club:</b> Peter Clowes, Sec., bottishambowlingclub@gmail.com .....	07756 431234
<b>Bottisham Carpet Bowls Club:</b> Nora Watson, nora@gandnwatson.uk .....	812121
<b>Bottisham Cricket Club:</b> Chairman: Will Allen, Chairman@bottlodecricket.co.uk .....	07713 007757
<b>Bottisham Youth Football Club:</b> Adam Bridgland, adambridgland@hotmail.com .....	07764 488599
<b>Bottisham Local Charities Trustees:</b> secretary - Jonathan Barrett .....	07920 425154
<b>Bottisham Pool Association:</b> Manager - Harry Bubb .....	811121
<b>Bottisham Royal British Legion Branch:</b> PoC, Peter Walker; .....	811402
www.Britishlegion.org.uk/branches/bottisham	
<b>Queen's Court Day Centre:</b> .....	811905
<b>East Cambridgeshire District Offices:</b> .....	01353 665555
<b>East Cambridgeshire District Councillors:</b>	
Charlotte Cane, 34 Swaffham Road, Reach .....	07976 607512
John Trapp, 104 Commercial End, Swaffham Bulbeck .....	01223 812120
<b>Cambridgeshire County Councillor:</b> Alan Sharp, Alan.sharp@cambridgeshire.gov.uk .....	01638 507485/07794292941
<b>MP for Constituency:</b> Charlotte Cane, MP, charlotte.cane.mp@parliament.uk	
<b>Cambridgeshire Trading Standards Helpdesk:</b> .....	0845 3030666
<b>Milton Road Tip:</b> Apr to Sept – Weekdays 9.00am-8.00pm: Weekends 9.00am-6.00pm .....	860674
Oct to Mar - 9.00am-4.00pm	
<b>CRESSET Editor:</b> email: BottishamCresset@gmail.com	
Treasurer, Advertising rates and payment: Rhona Walker, 94 High St .....	811402
Distribution: Ian & Helen Cole .....	812573
<b>Design/Artwork:</b> ONG (Old Newton Graphics) • www.codge.com .....	01449 675548
<b>Printing:</b> Falcon Printing Services, www.falconprinting.co.uk, jason@falconprintingservices.com .....	891286

**The Cresset:** While every effort is made to ensure accuracy we cannot accept liability for any mistakes or misprints. The views of, or any opinions expressed, are not those of the EDITOR. The Editor cannot accept any responsibility for statements made in advertisements

**BOTTISHAM CHURCH**

**ART**

**EXHIBITION**



---

**14TH OF JUNE 2025 ALL AGES UP TO 18**

---

Join us at Holy Trinity Church Bottisham for a colourful celebration where young people from the village will be showcasing their unique talent and imaginations!

More details in next months Cresset!

---

# E.C. AUTOCARE

(Est. 1980)



**SERVICING & REPAIRS**  
**Cars & Light Commercial**  
**Diesel & Petrol**



**MOT TESTING STATION**

**Servicing to all makes of Cars  
& Light Commercial**

**WE  
ARE STILL  
OPEN IN THE HIGH  
STREET FOR THE  
FORSEEABLE  
FUTURE**

- ENGINE MANAGEMENT DIAGNOSTICS**
- TYRE - BRAKES - EXHAUSTS**
- AIR CONDITIONING SERVICING**
- GEARBOX SPECIALISTS** MANUAL & AUTOMATIC

**FAST, FRIENDLY, FAMILY BUSINESS**

**56 HIGH STREET, BOTTISHAM**

Also at

**A1303 SERVICE STATION, BOTTISHAM**  
**(behind Brian McKay)**

**Tel.01223 811122 or 01223 812357**

